



Dr. Ricardo Baroudi, Patron of RBCP

Dr. Ricardo Baroudi, Patrono da RBCP



Few people have the ability to master all the aspects of a profession. Dr. Ricardo Baroudi was such a person. Teaching, research, and scientific publication were matched with social awareness, ethicality, and concern for the future.

A bold professional, he developed and reported surgical principles, techniques, and strategies, many of which are firmly incorporated in daily specialty practice.

The passage of time transforms ideas into concepts and concepts into principles. Baroudi's adherence sutures, the result of his surgical insight, are part of the technical basis of abdominoplasty, as well as several other procedures. However, Dr.

Baroudi did not limit himself to a concept, but instead took the initiative. His techniques were published, disseminated, recognized, and finally enshrined and eponymous. It is interesting how well the definition of eponymous applies: a reference to a historical or mythical personality that names something.

Although he did not follow a typical academic career, Dr. Baroudi performed at a level he expected from his peers. He used his personal clinical experience to create a unique approach to research and to disseminate knowledge. This was characteristic of the late Dr. Ricardo – to transform a new idea into an instrument of practical use, but based on scientific revelation.

Dr. Baroudi made extensive contributions to science, through dozens of published articles, book chapters, and edited books.

I personally had the pleasure of communicating with Dr. Baroudi for almost a decade as an associate editor of the Brazilian Journal of Plastic Surgery, when he was Editor-in-Chief. He stubbornly persevered in making the Journal consistent, stimulating in all ways the interest of plastic surgeons in publishing. He was successful, and the Journal today is very different from a decade ago, having adapted to modern concepts of medical science, thanks to continuous daily work and dedication. On behalf of all members of our Society,

we eternally thank Dr. Ricardo Baroudi for his immeasurable contribution to plastic surgery in Brazil and worldwide.

DOV GOLDENBERG
Editor-in-Chief of the RBCP

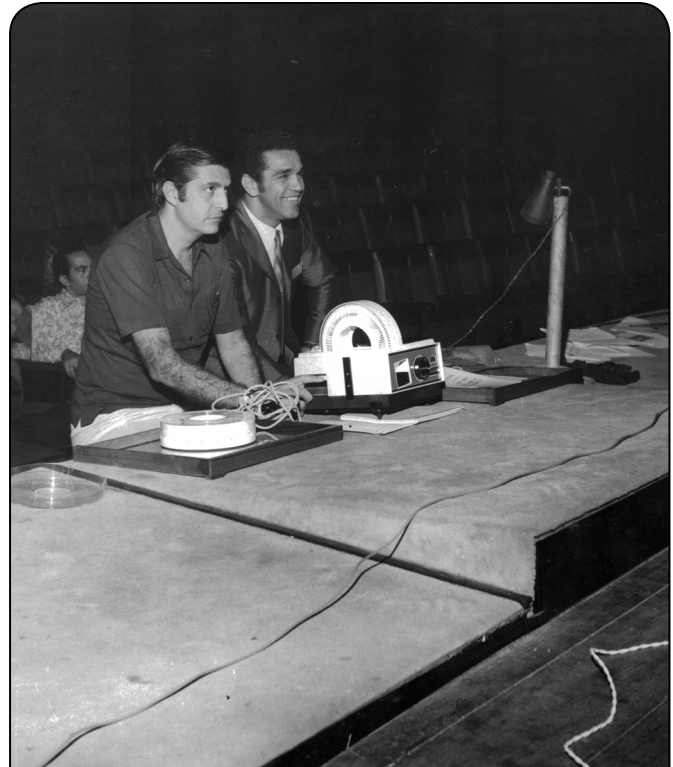
EDITORIAL COMMITTEE

Books/Chapters

- Baroldi R. *Cirurgia do Contorno Corporal*. São Paulo: Indexa; 2009.
- Baker TJ, Baroldi R. Apresentação. In: Gasparoti M. *Lipoescultura, contorno corporal, celulite*. Rio de Janeiro: Revinter; 2008.
- Melega JM, Baroudi R, eds. *Cirurgia Plástica Fundamentos e Arte: cirurgia estética*. Rio de Janeiro: Medsi; 2003.
- Baroldi R. Foreword. In: Gasparotti M, Lewis CM, Toledo L. *Superficial Liposculpture: Manual of Technique*. New York: Springer; 1993
- Baroldi R. Traditional Approach to Brachioplasty. In: Ali A, Nahas F, eds. *The Art of Body Contouring: A Comprehensive Approach*. New York: Thieme; 2015.

Articles

- Fakhouri RN, Baroudi R. Retalho dermocutâneo abdominal para reconstrução de área cruenta pós-fasceíte necrotizante. *Rev Bras Cir Plást.* 2016;31(4):596-8.
- Souza RS, Rocha AM, Baroudi R. Piriformeplastia associada à rinoplastia aberta. *Rev Bras Cir Plást.* 2017;32(2):169-73.
- Soncini JA, Baroudi R. Revisão da técnica de abdominoplastia com dissecação reduzida e fixação com pontos de Baroudi. *Rev Bras Cir Plást.* 2016;31(2):166-71.
- Ruston A, Rocco M, Baroudi R. Extração de unidades foliculares: transplante capilar sem cicatriz linear. *Rev Bras Cir Plást.* 2014;29(2):201-8.
- Destro MWB, Destro C, Baroudi R. Pontos de adesão nas ritidoplastias: estudo comparativo. *Rev Bras Cir Plást.* 2013;28(1):55-8.
- Abboud M, Saad D, Baroudi R. Retalho toracodorsal desepitelizado: um novo conceito para a reconstrução autóloga da mama. *Rev Bras Cir Plást.* 2013;28(1):65-71.
- Reno BA, Mizukami A, Calaes IL, Staut JG, Claro BM, Baroudi R, et al. Neo-onfaloplastia no decurso das abdominoplastias em âncora em pacientes pós-cirurgia bariátrica. *Rev Bras Cir Plást.* 2013;28(1):114-8.
- Desenhando o retalho rômbo em relação às linhas de extensão máxima/ Designing the rhombic flap in relation to the lines of maximal extension
- Baroudi R. *Rev Bras Cir Plást.* 2012;27(3):496.
- Riascos A, Baroudi R. Ritidoplastia sem cicatriz periauricular. *Rev Bras Cir Plást.* 2012;27(2):260-5.
- Yacoub CD, Baroudi R, Yacoub MB. Abdominoplastia reversa estendida. *Rev Bras Cir Plást.* 2012;27(2):328-32.



VIII CONGRESSO BRASILEIRO DE CIRURGIA PLÁSTICA
PROMOVIDO PELA SEÇÃO DE BARRIA
PATROCINADO PELA SOCIEDADE BRASILEIRA DE CIRURGIA PLÁSTICA
9-14 DE MAIO DE 1971

- Goldenberg DC, Baroudi R. O problema dos implantes de silicone e o impacto na qualidade de vida. *Rev Bras Cir Plást.* 2012;27(1):1.
- de Camargo Bueno MA, Cavazana WC, Baroudi R, Nunes PH, Psillakis JM, de Fátima Santana Ferreira Boin I. Running circular suture technique for reduction mammoplasty and mastopexy. *Aesthetic Plast Surg.* 2012;36(6):1320-8. DOI: 10.1007/s00266-012-9972-4.
 - Andriolo A, Souza AF, Farias AQ, Barbosa AJ, Netto AS, Hernandez AJ, et al. Classification of journals in the QUALIS system of CAPES: urgent need of changing the criteria! *J Bras Nefrol.* 2010;32(1):4-6. PMID: 21448525.
 - Baroudi R. What more can we say to the new generations of plastic surgeons? *J Craniofac Surg.* 2011;22(2):380-2. DOI: 10.1097/SCS.0b013e31820f75c6. PubMed PMID: 21415622.
 - Baroudi R, Ferreira CA. Arm contouring. *Aesthet Surg J.* 2003;23(4):290-2. DOI: 10.1016/S1090-820X(03)00160-2. PubMed PMID: 19336092.
 - Hughes CE 3rd, Lockwood TE, Baroudi R, Matarasso A. Abdominoplasty. *Aesthet Surg J.* 2002;22(5):465-73. DOI: 10.1067/maj.2002.129158. PubMed PMID: 19332001.
 - Baroudi R, Ferreira CA. Seroma: how to avoid it and how to treat it. *Aesthet Surg J.* 1998;18(6):439-41. PMID: 19328174.
 - Novaes F, dos Reis N, Baroudi R. Counting method of live fat cells used in lipoinjection procedures. *Aesthetic Plast Surg.* 1998;22(1):12-5. PMID: 9456348.
 - Baroudi R, Ferreira CA. Contouring the hip and the abdomen. *Clin Plast Surg.* 1996;23(4):551-72. PubMed PMID: 8906390.

9. Baroudi R, Moraes M. A "bicycle-handlebar" type of incision for primary and secondary abdominoplasty. *Aesthetic Plast Surg.* 1995;19(4):307-20. PubMed PMID: 7484469.
10. Baroudi R. Flankplasty: a specific treatment to improve body contouring. *Ann Plast Surg.* 1991;27(5):404-20. PubMed PMID: 1746861.
11. Baroudi R. Why aesthetic plastic surgery became popular in Brazil. *Ann Plast Surg.* 1991;27(5):396-7. PubMed PMID: 1746859.
12. Baroudi R, Moraes M. Philosophy, technical principles, selection, and indication in body contouring surgery. *Aesthetic Plast Surg.* 1991;15(1):1-18. PubMed PMID: 1994645.
13. Baroudi R. Body contour surgery. *Clin Plast Surg.* 1989;16(2):263-77. PubMed PMID: 2661106.
14. Baroudi R. Body sculpturing. *Clin Plast Surg.* 1984;11(3):419-43. PubMed PMID: 6147222.
15. Carvalho CG, Baroudi R. Mammoplasties: surgical refinements of the nipple-areola complex. *Ann Plast Surg.* 1982;8(6):458-67. PubMed PMID: 7051943.
16. Baroudi R. Plastic surgery in Brazil. *Ann Plast Surg.* 1981;6(6):420-3. PubMed PMID: 7271169.
17. Baroudi R. Two consecutive abdominoplasties to solve a problem of striae. *Aesthetic Plast Surg.* 1979;3(1):321-5. DOI: 10.1007/BF01577870. PubMed PMID: 24174002.
18. Regnault P, Baroudi R, de Silveira Carvalho CG. Correction of lower limb lipodystrophy. *Aesthetic Plast Surg.* 1979;3(1):233-49. DOI: 10.1007/BF01577860. PubMed PMID: 24173994.
19. Baroudi R, Keppke EM, Carvalho CG. The square chin and the pointed chin: Another refinement in facial aesthetics. *Aesthetic Plast Surg.* 1979;3(1):129-33. DOI: 10.1007/BF01577846. PubMed PMID: 24173982.
20. Baroudi R, Keppke EM, Carvalho CG. Mammary reduction combined with reverse abdominoplasty. *Ann Plast Surg.* 1979;2(5):368-73. PubMed PMID: 543599.
21. Baroudi R, Keppke EM, Carvalho C. Breast modeling after subcutaneous mastectomy. *Aesthetic Plast Surg.* 1978;2(1):235-46. DOI: 10.1007/BF01577956. PubMed PMID: 24173850.
22. D'Ottaviano N, Baroudi R, Keppke EM. Dental rotation in cleft lip. *Ann Plast Surg.* 1978;1(4):407-10. PubMed PMID: 727677.
23. Baroudi R, Pinotti JA, Keppke EM. A transverse thoracoabdominal skin flap for closure after radical mastectomy. *Plast Reconstr Surg.* 1978;61(4):547-54. PubMed PMID: 345306.
24. da Silveira Carvalho CG, Baroudi R, Keppke EM. Anatomical and technical refinements for abdominoplasty. *Aesthetic Plast Surg.* 1976;1(1):217-28. DOI: 10.1007/BF01570254. PubMed PMID: 24173746.
25. Baroudi R, Lewis JR. The augmentation-reduction mammoplasty. *Clin Plast Surg.* 1976;3(2):301-8. PubMed PMID: 1261184.
26. Baroudi R, Keppke EM, Carvalho CS. Rhytidectomy: analytical study of the incisions. *Ann Chir Plast.* 1976;21(2):137-45. PubMed PMID: 970922.
27. Baroudi R. Umbilicoplasty. *Clin Plast Surg.* 1975;2(3):431-48. PubMed PMID: 125176.
28. Keppke EM, Baroudi R, Netto FT. Cabinet for filling diapositives. *AMB Rev Assoc Med Bras.* 1975;21(3):92-4. PubMed PMID: 1079618.
29. Baroudi R, Keppke EM, Netto FT. Abdominoplasty. *Plast Reconstr Surg.* 1974;54(2):161-8. PubMed PMID: 4276452.
30. D'Ottaviano N, Baroudi R. Surgical and esthetic aspects of the facial profile. *Int J Oral Surg.* 1974;3(5):243-6. PubMed PMID: 4213952.
31. Farina R, Attadia ER, de Carvalho C, Baroudi R. Xerophthalmia. Surgical treatment by transplant of the parotid duct. *Rev Paul Med.* 1961;58:227-34. PubMed PMID: 13698191.
32. Farina R, de Freire GC, Keppke EM, Peggion A, Baroudi R. Surgical treatment of hypospadias. *Chirurg.* 1961;32:125-9. PubMed PMID: 13698194.
33. Farina R, Mion D, Baroudi R, Golcman B. Comparative advantages of frontal flaps and nasogenial in the substitution of nasal substance. *Ann Chir Plast.* 1960;5:279-86. PubMed PMID: 13698195.
34. Farina R, Attadia ER, de Carvalho C, Baroudi R. Xerophthalmia. Surgical treatment by transplantation of parotid duct. *Probl Sovrem Neurokhirurgii.* 1960;26:410-6. PubMed PMID: 24545579.
35. Farina R, Mion D, Baroudi R, Golcman B. Frontal flaps versus nasogenial flaps in the substitution of nasal substance. *Rev Paul Med.* 1960;57:22-31. PubMed PMID: 13821570.
36. Farina R, Baroudi R, Golcman B, de Castro. Riding-trousers-like type of pelvicrural lipodystrophy (trochanteric lipomatosis). *Br J Plast Surg.* 1960;13:174-8. PubMed PMID: 13821567.
37. Farina R, Baroudi R, Golcman B, de Castro. Pelvicrural lipodystrophy of riding-breeches type (trochanteric lipomatosis). *Hospital (Rio J).* 1960;57:717-22. PubMed PMID: 13821568.
38. Farina R, Golcman B, Baroudi R, Keppke EM. Auris externa ad ansam (otoplasty). *Rev Paul Med.* 1960;56:95-105. PubMed PMID: 13821569.
39. Farina R, de Castro O, Baroudi R. Importance of alar, triangular & quadrangular cartilages in rhinoplasty. *Rev Paul Med.* 1959;54(1):1-14. PubMed PMID: 13646200.